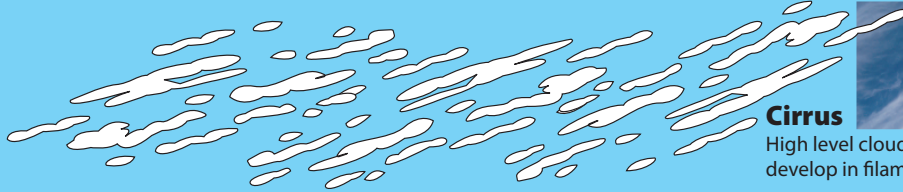


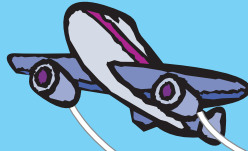
Cirrocumulus

High level clouds made of ice crystals that have a spotty appearance created by the many small patches.



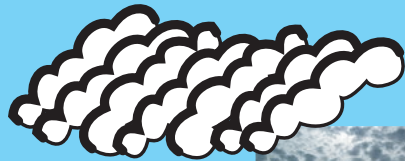
Cirrus

High level clouds made of ice crystals that develop in filaments or wispy patches



Contrails

Clouds created by water vapor condensing into ice crystals from the exhaust of planes that fly at high altitudes.



Alto cumulus

Medium height clouds that show up with a regular pattern of rolls and puffs.

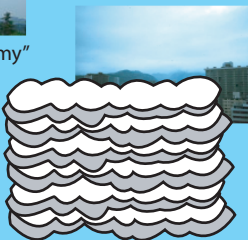
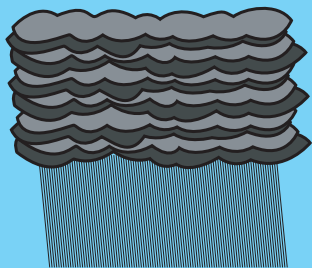
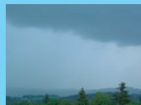


Cloud Map

This Cloud Map will help you understand how different kinds of clouds are related and where they are seen in the sky.

Nimbostratus

A stratus cloud ready to rain, snow, or drizzle. The "nimbo" part is used to mean "dark and stormy"



Stratus

Stretched out clouds stacked in one or more layers.



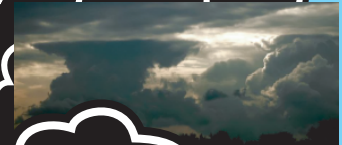
Stratocumulus

Stretched out and puffy clouds stacked in one or more layers. A mixture of stratus and cumulus cloud types.



Cumulus

Fair weather, heaped up, puffy clouds. Flat on bottom and round on top.



Cumulonimbus

A large, vertical cumulus cloud that is dark and ready to rain or hail heavily. They have strong updrafts of air and can cause dangerous thunderstorms or tornados. "Nimbus" means "dark/stormy"

